



# Transit Options in Marin

Inform and Connect

June 29<sup>th</sup>, 2016

# Transportation Network Companies (TNC's)

**Transportation Network Companies (TNCs) hold charter-party carrier (TCP) permits to provide prearranged transportation services for compensation using an online-enabled application or platform (such as smart phone apps) to connect passengers with drivers using their personal vehicles**



# Other Options



**A for-profit provider of senior transportation, SilverRide provides one way, round-trip or multi-stop rides. Their transportation is provided by their Driver Escorts in a SilverRide luxury cruiser.**

**A for-profit provider of concierge service for seniors. Can help with personal shopping, rides to medical or shopping, pharmacy pick-ups, garden care, and a host of other services.**



**A for-profit provider wheelchair transportation services, in San Francisco, Marin and Sonoma counties. All vans are ADA compliant, and equipped with Stryker stair chairs to tackle those flights of stairs.**

# Fixed Route Transit

## Local Service Within Marin



## Regional Service – Into SF, Sonoma & Contra Costa



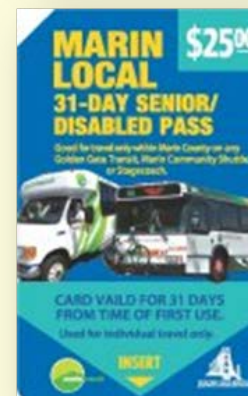
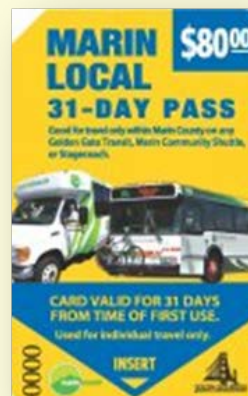
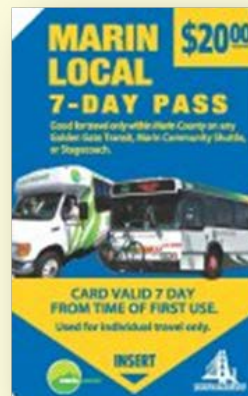
# Fixed Route Transit

- **Advantages**
  - Doesn't have to be pre-scheduled
  - Only \$1 for seniors and the disabled (within Marin)
  - Fully wheelchair accessible
- **Service expansion in June (almost 20%)**



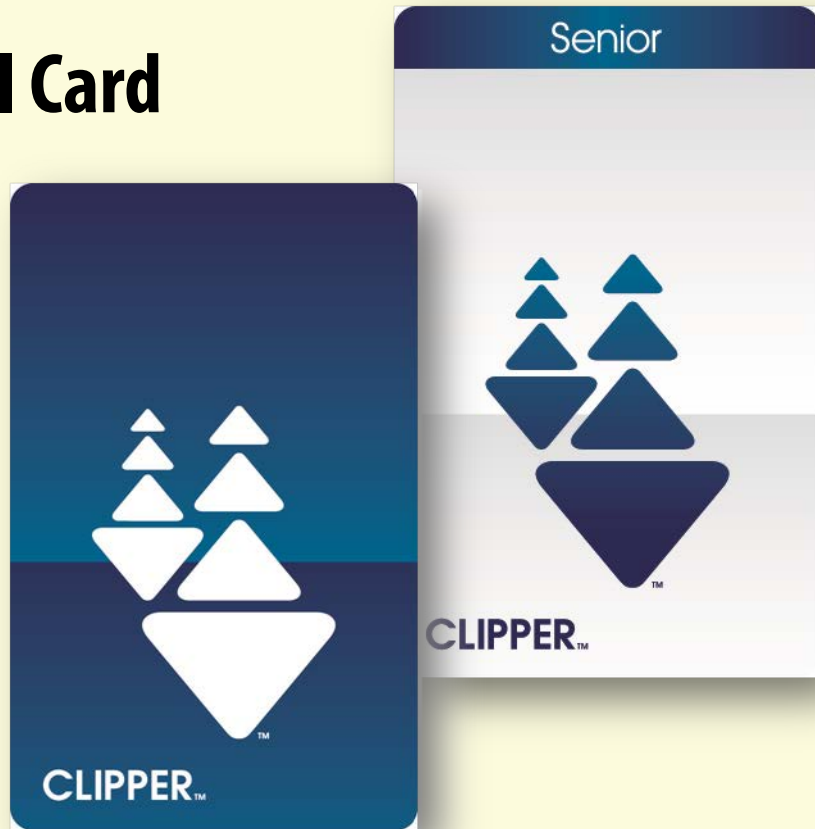
# Fixed Route Passes

- **Monthly Savings**
- **Easy to use**
- **Marin only**



# Clipper

- **Card Cost**
- **Senior Card vs General Card**
- **Disabled RTC Cards**





# Ferry Services

- Two operators
- Three ferry docks – Larkspur / Sausalito / Tiburon
- No ticket vendors in Larkspur
- Parking in Larkspur





# SMART



## Stage 1 Arriving Late 2016

- Service from Sonoma County Airport to San Rafael Transit Center – Service to Larkspur Ferry to follow
- 30 minute service during commute hours (mid day and weekend service planned)

## Stage 2

- Service Extended to Cloverdale



# Novato Services

**Novato Dial A Ride** : Novato Dial A Ride is designed to fill gaps in Novato's local transit service and provide additional service. You can use the dial-a-ride service to make a complete trip within Novato or connect to fixed route transit service for travel outside of Novato. Novato Dial A Ride can be reached at 415.892.7899.

**Hamilton Shuttle**: The Hamilton Shuttle is a free program paid for by the Hamilton Homeowners Association designed to transport residents and employees of Hamilton Field in Novato. For information on scheduled times and stops please contact 415.454.0964.



# Marin Access – What is it?



Programs for Seniors and People with Disabilities

Travel Navigators

Travel Training

Marin Catch-A-Ride

Marin Access Paratransit

STAR and TRIP Volunteer Driver

# Marin Access - Travel Navigators

## Personalized eligibility and program information



**Travel Navigators**  
**(415) 456-0902**



# Marin Access - Paratransit



## **The Americans with Disabilities Act (ADA) of 1990**

- **Equal right**
- **Complimentary service**

**In Marin County this service is operated by Whistlestop under contract with Marin Transit.**





# Marin Access - Paratransit

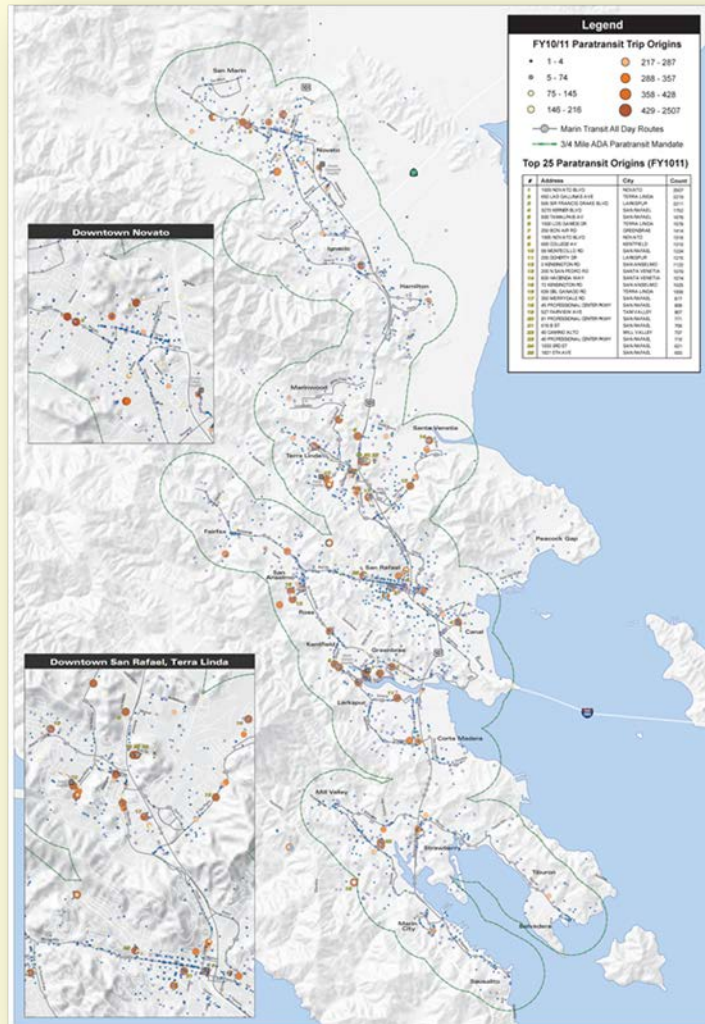
## Program Usage

- Ride Share
- Call to schedule 1 to 7 days in advance
- Can bring one aid at no cost
- Can bring one companion
- All vehicles are equipped with wheelchair lifts
- Service is Door-to-Door





# Marin Access - Paratransit



## Service Area

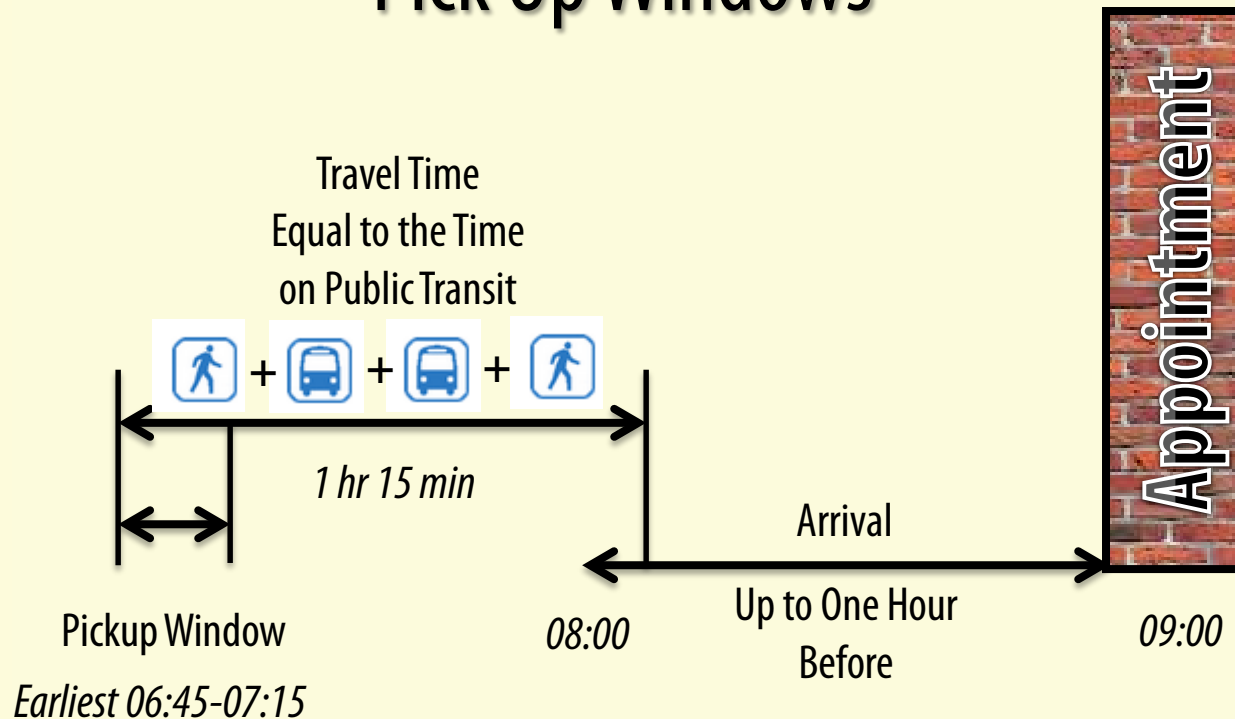
- $\frac{3}{4}$  mile of an active transit run
- Limited service to Sonoma, Contra Costa and SF Counties.
- Transfers can be arranged to go further

## Fare

- Within Marin = \$2.00 (\$2.50 if outside the service area)
- Starting or Ending outside Marin = double fixed route

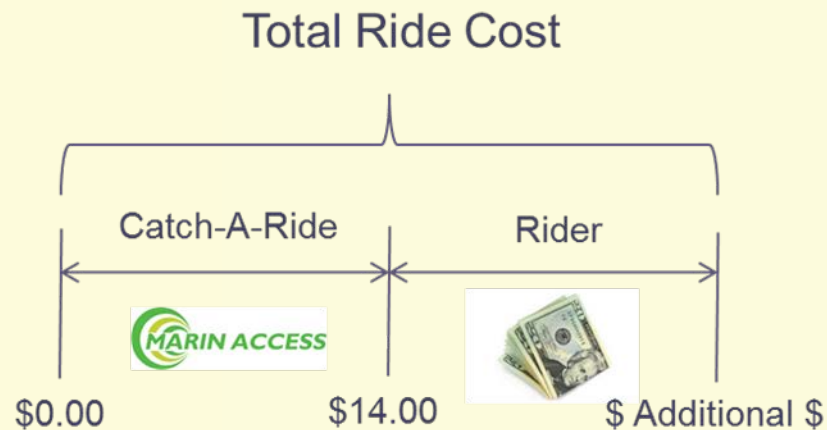
# Marin Access - Paratransit

## Pick Up Windows



# Marin Access – Catch A Ride

## Subsidized Taxi Rides Within Marin County



# Marin Access - Travel Training



- **Group Presentations**
- **1 on 1 and small group trainings “Transit Tours”**
- **Route 149 through College of Marin Disabled Students**

# Volunteer Driver

- **Marin Access Volunteer Driver (STAR and TRIP)**
- **Marin Villages**
- **Carepool**
- **CARSS**







# Taxi



**Only company with a large centralized dispatch**

**Many others. Most single owner /operators or small fleet**





# Transit Information on the Web

[www.marintransit.org](http://www.marintransit.org)

[www.marinaccess.org](http://www.marinaccess.org)

[www.511.org](http://www.511.org)

<https://maps.google.com/landing/transit/index.html>



## What is Marin Access?

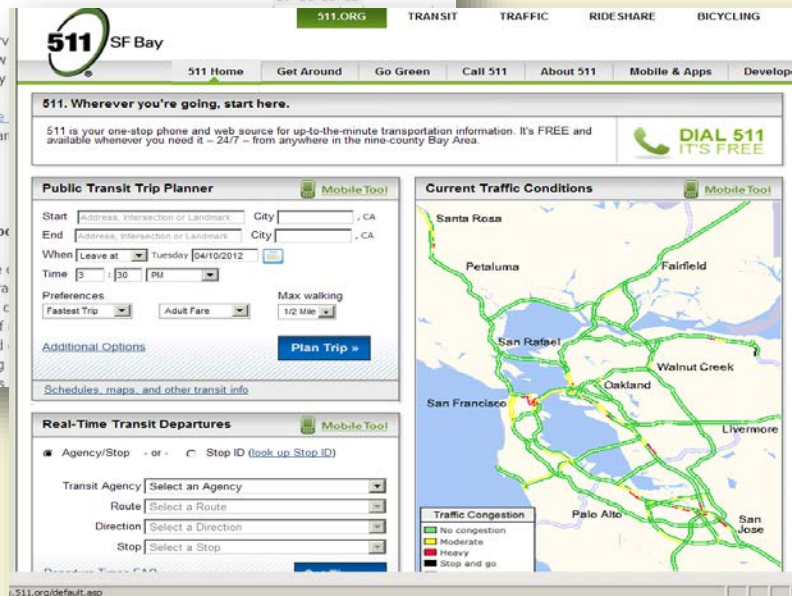
Marin Access provides a wealth of transit serv older adults, persons with disabilities and low residents. This program is brought to you by

This website provides an [overview of who we](#) downloads for all necessary [documentation](#) ar programs offered in Marin.

## News & Alerts

### Whistlestop Prepares to Launch "CarePool"

Did you mean carpool? No, CarePool, it's the those in need. Whistlestop recently won a gra Traditional Volunteer Driver Program we are c program whereby Whistlestop recruits lots of mind offering a ride to an older adult in need shop. Once we have lots of volunteers willing we will roll out the program to the thousands



# Questions ?

Jon Gaffney

Senior Mobility Analyst

Marin Transit

415-226-0869

[jgaffney@marintransit.org](mailto:jgaffney@marintransit.org)

Website: [www.marintransit.org](http://www.marintransit.org)

## **Marin Access Travel Navigators**

930 Tamalpais Ave

San Rafael, CA 94901

415-454-0902

Website: [www.marinaccess.org](http://www.marinaccess.org)

